



COMPANY PROFILE

PARTNERING FOR GROWTH THROUGH
INNOVATION AND QUALITY.



Company Details

Registration Number: 2019/113876/07
CIDB Gradings: 1GB, 1CE, 1SL, 1SO, 1EP
B-BBEE Certificate: Level 1
Income Tax Number: 9045251270
VAT Number: 4410292736



WELCOME TO WATERBERG PROJECTS

Company Summary

Waterberg Projects, established in 2019 by Mr. Tlhomphe Ananias Seretlo, is a dynamic and visionary company based in Lerupurupung Village within the Lephalale Municipality, Limpopo Province. As a 100% black-owned enterprise, it was founded to address critical service needs in the Environmental and construction sectors while contributing to economic empowerment and social upliftment in marginalized communities.





With a steadfast commitment to service excellence, the company delivers a diverse range of high-quality services, from environmental solutions to a comprehensive building and civil construction. Its offerings are tailored to meet the needs of private companies, government departments, and individual clients. By leveraging the latest technologies and adhering to strict quality standards, Waterberg Projects ensures exceptional results in every project it undertakes.



Vision Statement

To be a leading Environmental solutions and construction services provider that consistently delivers high- quality, innovative, and reliable solutions, empowering communities and breaking the cycle of poverty through sustainable job creation and skills development.

Mission Statement

- Our mission is to provide exceptional environmental and construction related services by leveraging modern technology, fostering a skilled workforce, and maintaining the highest standards of integrity, transparency, and excellence.
- We aim to create meaningful employment opportunities and contribute to the economic growth of marginalized communities while building lasting partnerships with our clients and stakeholders.



COMPANY OBJECTIVES

1. Deliver High-Quality Projects

- Ensure all construction and engineering projects meet or exceed industry standards, client expectations, and regulatory requirements.
- Commit to continuous improvement in construction techniques and technologies.

3. Foster Client Satisfaction

- Build strong, transparent relationships with clients through effective communication and on-time project delivery.
- Tailor solutions to meet the specific needs and goals of each client.

2. Promote Sustainability and Environmental Responsibility

- Minimize environmental impact by adopting eco-friendly construction practices, reducing waste, and prioritizing resource efficiency.
- Comply with all environmental laws and regulations in the regions of operation.
- Integrate sustainable design principles and promote the use of renewable energy and green materials in projects.

4. Ensure Health and Safety Standards

- Prioritize the health and safety of workers, clients, and stakeholders by maintaining a safe construction environment.
- Implement rigorous health and safety protocols and provide regular training to staff.

CEO.

Since our establishment in 2019, we have been committed to addressing the critical needs of the environmental and construction sector and beyond, offering innovative, high-quality solutions tailored to meet the unique requirements of both private and public sectors. Our journey has been one of resilience, growth, and purpose.

As a proudly black-owned enterprise rooted in the heart of Limpopo, we have made it our mission to empower individuals through employment, training, and skill development, while fostering economic growth in marginalized communities. By adhering to our core values of transparency, accountability, and inclusivity, we have built a foundation of trust and reliability with our clients and partners.

Mr Tlhompho A. Seretlo

OUR COMPANY SERVICES

Our services cater to a wide range of clients, including private companies, government departments, and individuals. By leveraging the latest technologies, we deliver environmental and construction solutions that set new benchmarks for quality, ensuring excellence and value for all our clients.

Garden Services: Landscaping & Horticulture

Grass Cutting

Landscaping

Horticulture

Sanitation:

Honey Sucking

Portable Toilet Hire

Portable and VIP Mobile Toilets

Portable and VIP

Plumbing & Maintenances



**Village
Management:**

Maintenance of Buildings

Garden and Grounds Maintenance

Cleaning of Offices

Maintain the Supply of Water

Maintaining Sewage Works and Ablution Facilities

Waste Management

Plant Hire

Waterberg Projects provides high-quality and reliable plant hire services to support construction and infrastructure projects. Our fleet includes earthmoving equipment, loaders, excavators, and more, suitable for various site requirements. We ensure that all machinery is regularly maintained and compliant with industry standards to guarantee efficiency and safety.

Concrete Slabs and Floors

Our expertise in concrete slabs and flooring includes design, preparation, and installation. We create durable, level surfaces for both indoor and outdoor applications, suitable for residential, industrial, or commercial use.



COAL TRANSPORTATION & TRUCKING SERVICES

Bulk Coal Transportation

Waterberg Projects provides reliable and efficient bulk coal transportation services tailored to mining operations, power stations, industrial plants, and private sector clients. We ensure timely and secure delivery while maintaining strict compliance with safety and environmental standards.

- Transportation of Run-of-Mine (ROM) Coal
- Washed Coal Haulage
- Peas, Duff and Discard Coal Transport
- Long-distance and Short-haul Coal Logistics
- Cross-Province Deliveries
- Contract and Spot Haulage Services





Side Tipper & Tautliner Operations

Our fleet includes high-capacity side tippers and specialised hauling units designed to handle large-volume bulk commodities safely and efficiently.

Capabilities include:

- 34-ton and Superlink Side Tippers
- Interlink and Superlink Fleet Solutions
- Tautliner Transport for Bagged Coal
- Scheduled Fleet Deployment
- 24/7 Operations for Mining Sites



Mine-to-Plant & Stockpile Management

We provide integrated logistics solutions from mine loading points to processing plants, stockyards, and end-user facilities.

Services include:

- Direct Mine Loading Coordination
- Stockpile Management Support
- Weighbridge Compliance & Documentation
- Route Planning & Risk Mitigation
- Real-time Load Monitoring

Logistics Planning & Compliance

Waterberg Projects prioritises operational excellence and regulatory compliance in all transportation activities.

We ensure:

- Adherence to Road Traffic and Mining Regulations
- OHS&A Compliance and Driver Safety Training
- Environmental Dust Control Measures
- Fleet Tracking & Telematics Monitoring
- Comprehensive Insurance Coverage

Value Proposition

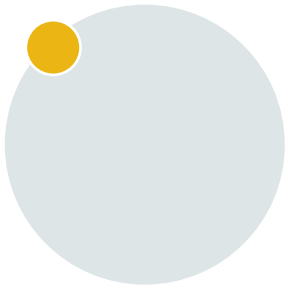
- Reliable and time-sensitive coal deliveries
- Experienced drivers with mining-sector exposure
- Safety-driven operations
- Flexible contract models
- Support for local mining operations in Limpopo and beyond

Bricklaying

Our skilled bricklayers are equipped to handle projects of any scale, from residential homes to commercial buildings. We use premium materials and techniques to construct sturdy, weather-resistant structures that meet client specifications.

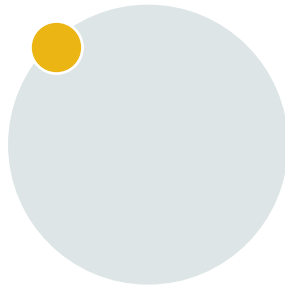


MANAGEMENT STRUCTURE



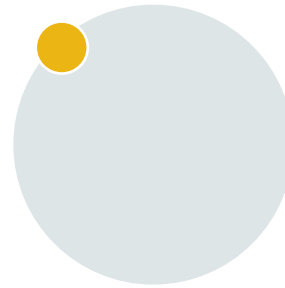
Managing Director

Responsible for overseeing overall operations, ensuring efficient execution of business activities, supervising teams, and spearheading strategic marketing initiatives to drive growth and visibility.



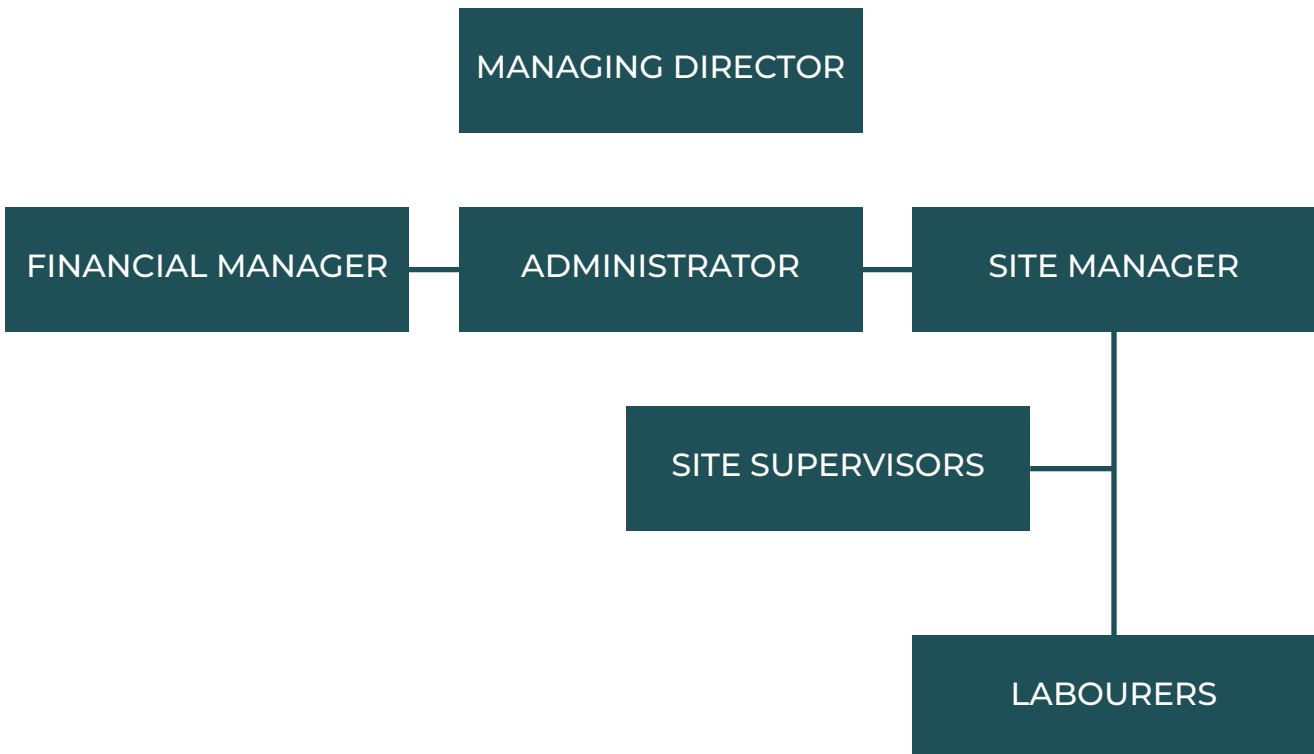
Financial Manager

Oversees the company's financial health by managing records, preparing reports, and coordinating audits, ensuring compliance and transparency in all financial matters.



Operational Manager

Plans, organizes, and supervises the technical and operational aspects of projects, ensuring efficient workflows and the timely completion of deliverables.

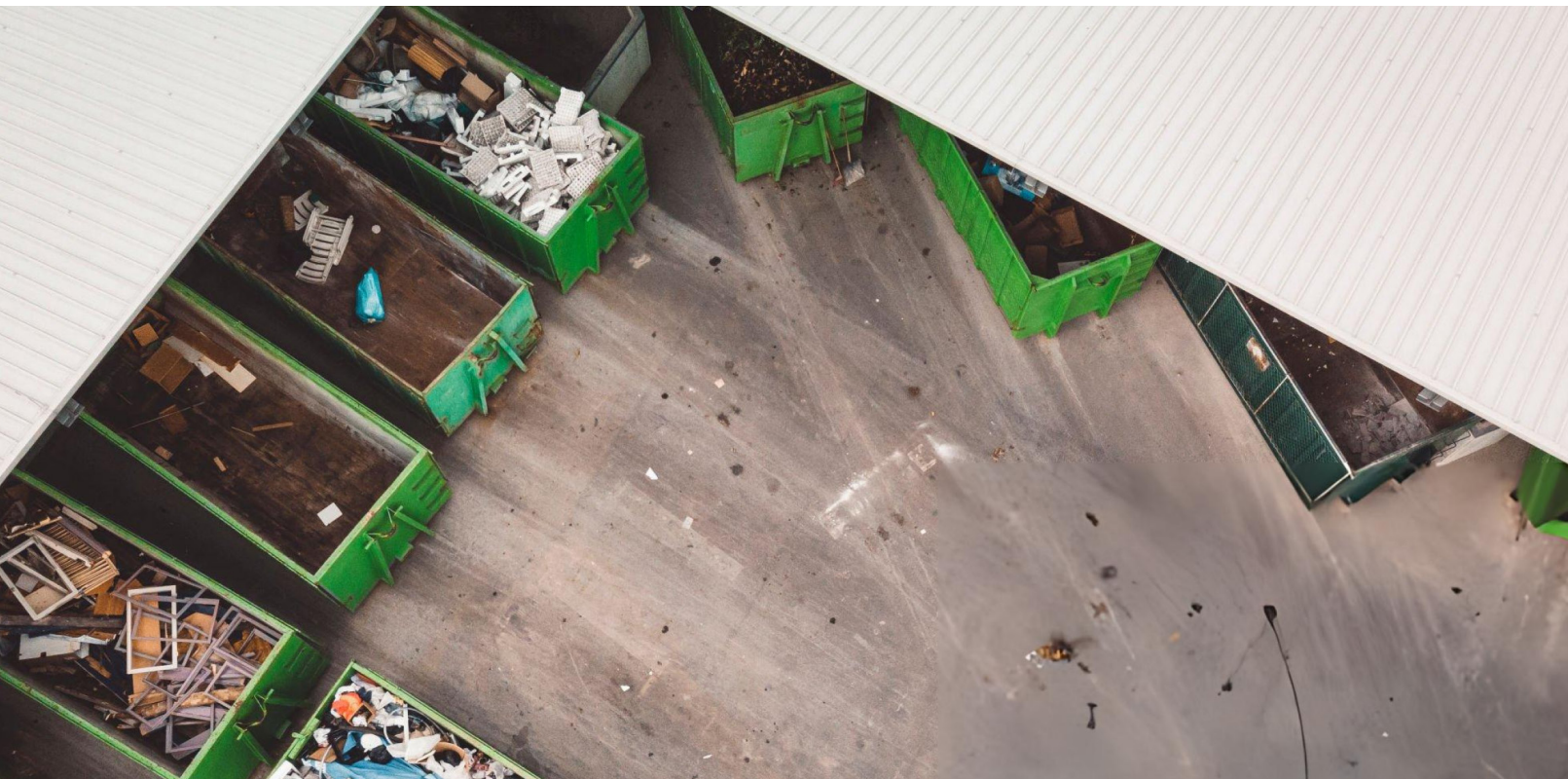


OUR PARTNERS

- Local and District Municipalities
- Government Departments and Agencies
- Mines
- Communities
- Private Sector

SUSTAINABILITY INITIATIVES

- Providing intensive training for employees.
- Actively seeking tender opportunities in government and private sectors.



SOCIAL AND COMMUNITY DEVELOPMENT

WATERBERG PROJECTS is committed to fostering development through partnerships and innovative approaches like Private-Public Partnerships (PPPs). Our efforts are aimed at driving socio-economic transformation and enhancing community well-being.



Company Information

084 412 4665

info@waterbergfoods.co.za

House No. 94
Lerupurupung Village
Ga-Seleka, Lephalale, 0609

Registration Number: 2019/113876/07
CIDB Gradings: 1GB, 1CE, 1SL, 1SO, 1EP
B-BBEE Certificate: Level 1
Income Tax Number: 9045251270
VAT Number: 4410292736